



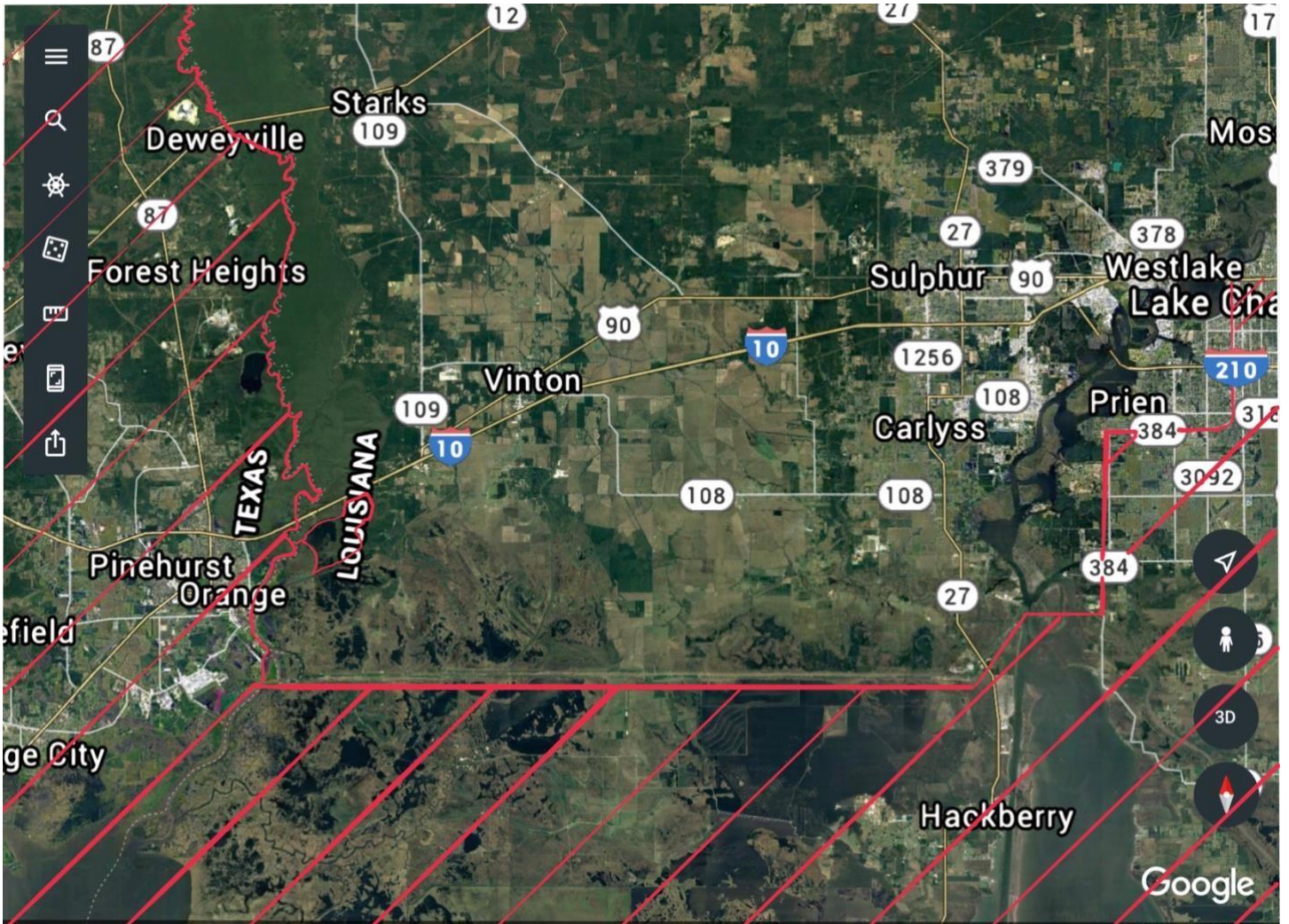
2024 LYBN State Championship, Calcasieu River

**Off-Limits/ Boundary Maps and
General Navigational
Information**

See below for off limits and traffic flow maps



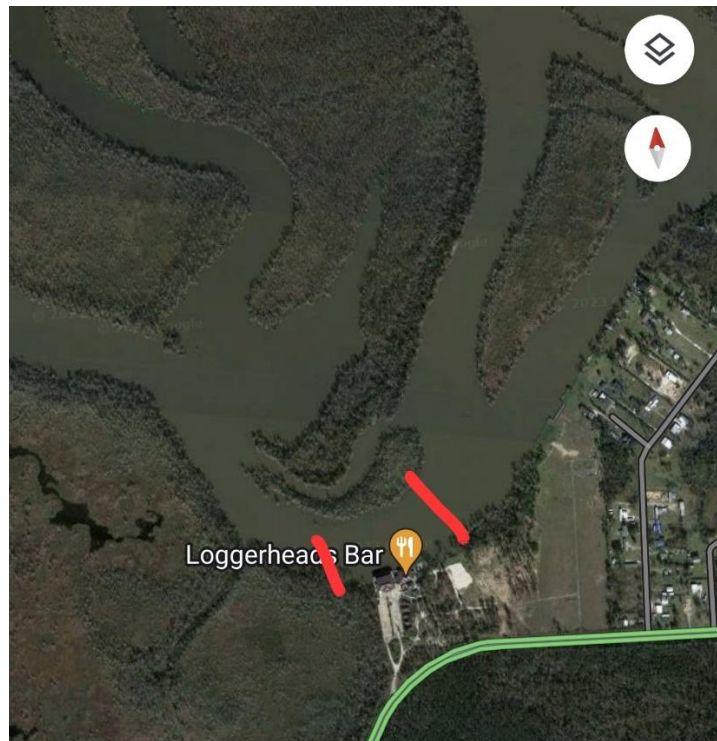
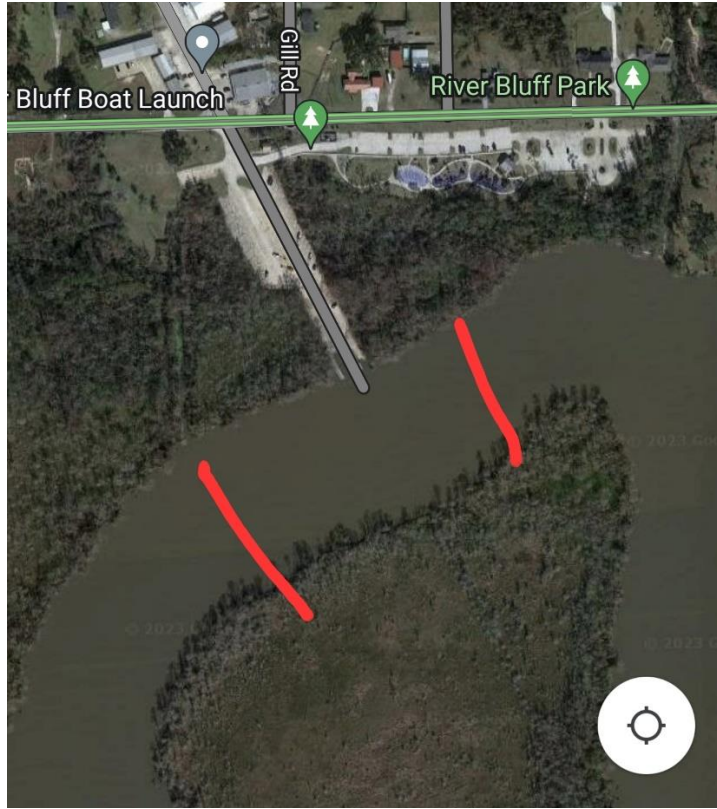
New Off Limits area!

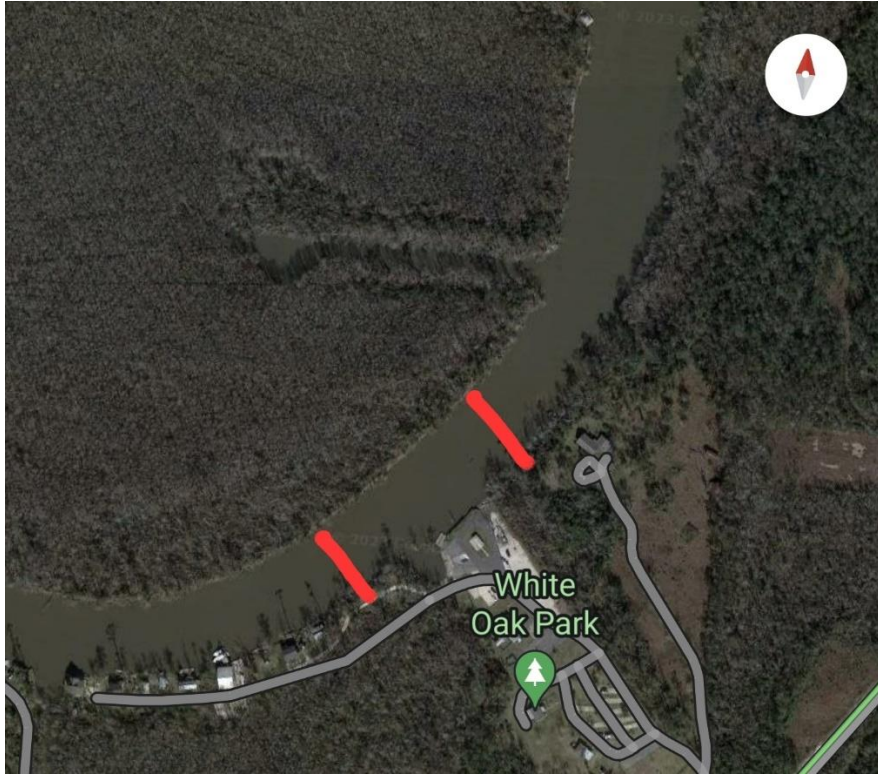


South, East, and West Off-Limits area

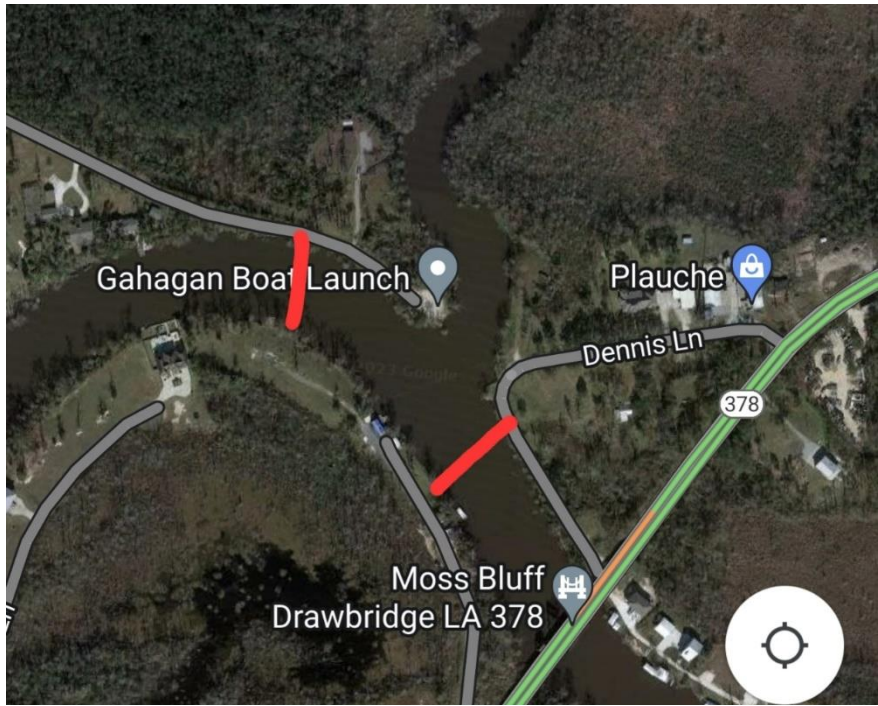
No Wake Zones



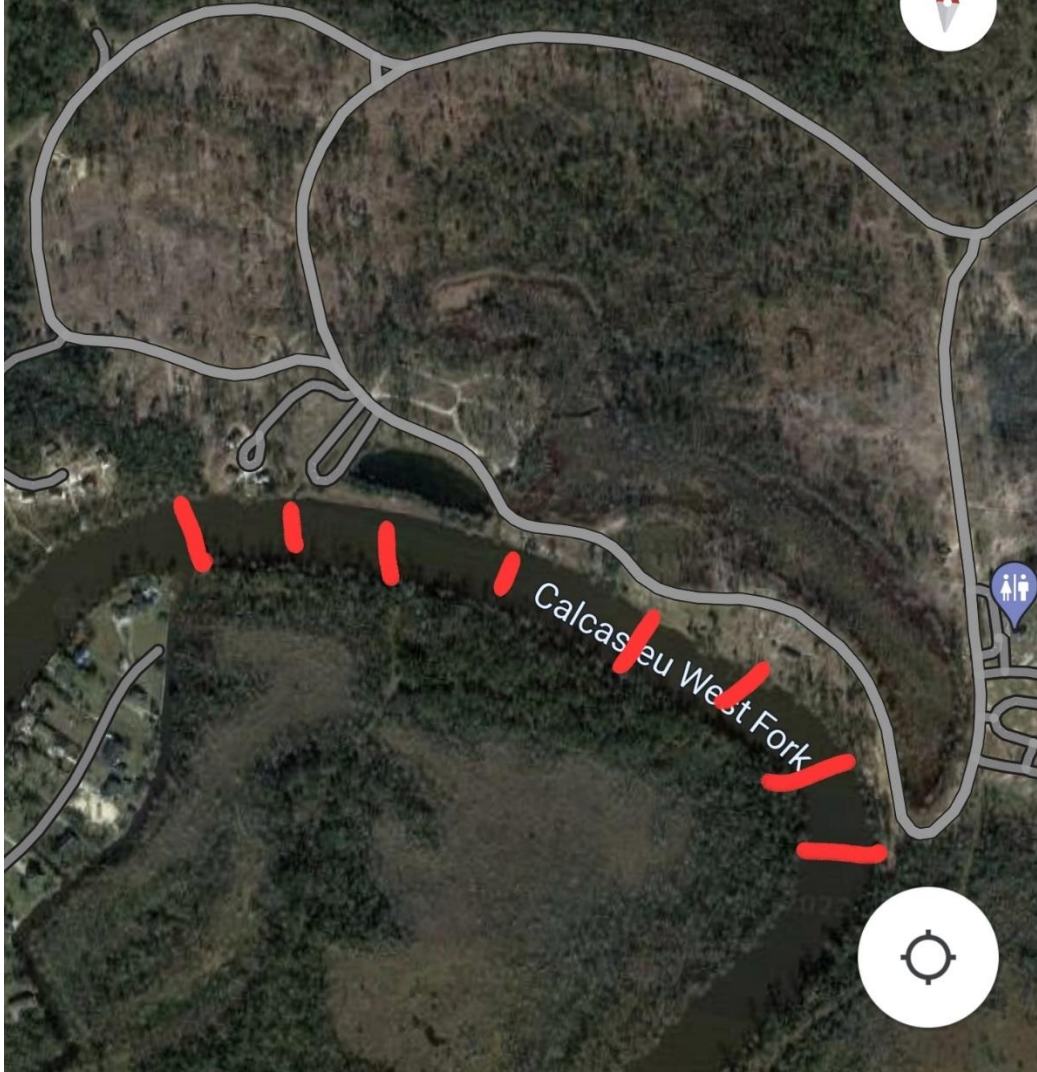




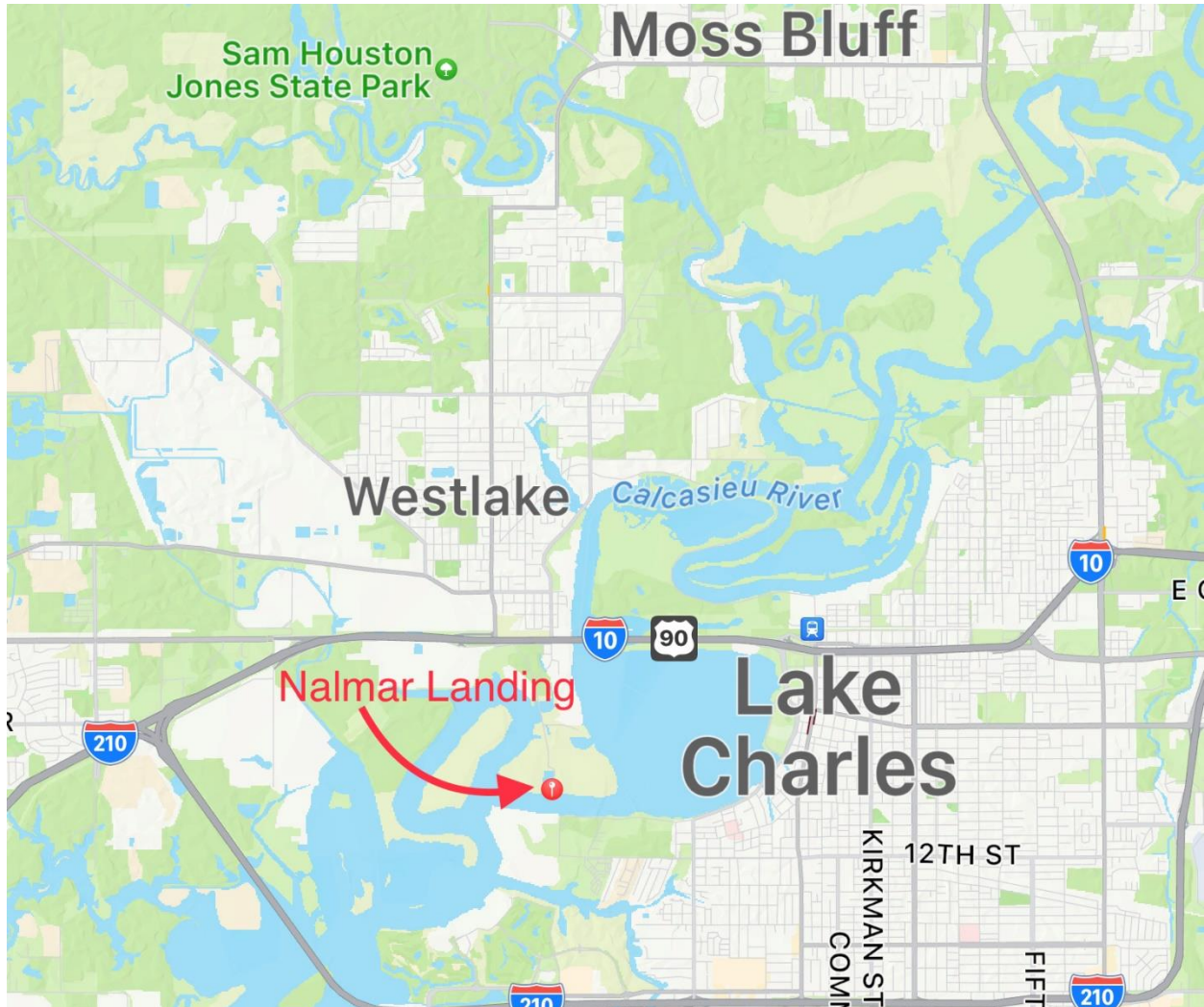
West Fork Calcasieu River



Sam Houston
Jones
State Park



On Water Fuel



- On-water fuel will be an issue for those traveling to the Sabine River.
 - High Tides has closed so that was the only option near Orange.
- Nalmar Landing is only 10 miles from Moss Bluff and so if you can make it to the Sabine and back that far, you could top off, or top off on the way.
 - Remember that there may be lines being the only option.
 - We've been told by Nalmar that they will have plenty of fuel for our teams making the trip.
- Be careful if making that run.

Calcasieu River Saltwater Barrier Recreational Vessels Locking Through

Boats can move from fresh to salt water through the Calcasieu River Saltwater Barrier.

Below is what you need to know to transit the lock safely. Moving from one side to the other, or "locking through," is a free service with facilities owned and operated by the U.S. Army Corps of Engineers. The process usually takes 4 to 5 minutes but may take longer when commercial traffic is near. Following the steps below will make the transition from one side to the other quick and easy.

- Stay in the navigation channel as marked by the signage. Be aware that some areas near locks can be dangerous. Always follow posted safety regulations. **DO NOT TRY TO PASS THROUGH THE SPILLWAY!**
- Use marine radio channel 14 to identify yourself to the lock operator and let him know your intentions. (If you have a marine vhf radio, not required) • Or pull the small-craft signal cord located near the security light closest to the concrete structure on the long approach walls.
- Once notified, the lock operator will adjust spillway gates to allow for safe passage if needed. He will then open the navigation gates to allow for passage.
- **Transit the lock at no-wake speed. Passengers should remain seated, and everyone aboard should wear a personal floatation device during the entire process.**
- Float in view of the operator until the gates are open. When the gates are fully open exit the lock. Exit at no-wake speed, and do not pass any other vessels as you transit the lock.
- The red/green signal lights are only used for commercial traffic.
- All commercial traffic takes priority in transiting the lock, once a towboat is lined up the lock operator will allow him to transit before any recreation vessel. Many of the towboats that transit our structure are carrying petroleum products, please give them as wide a berth as possible and no open flames.
- Read and obey signage in the area. The structure was built in an old cypress forest. There are stump areas on both sides of the structure between the navigation and spillway channels.
- Follow the instructions of the Lock Operator. He knows the conditions of the water levels on both sides, wind, and weather. He is there for the safe passage of all vessels through the structure.