



Louisiana Youth B.A.S.S. Nation
2026 East Qualifier
Doiron's Landing, Morgan City
9/13/2025

Presented By

ZEALOUS
ENERGY AND ENVIRONMENTAL SERVICES

This document is a supplement to the official rules document and assists with important information.

Here are some maps and reminders for boat check at Doiron's Landing.

The address is:
3185 Highway 70
Morgan City LA 70380

Tournament waters are all water accessible from both the Spillway launch and the Carwash launch, north and across the street from Doiron's store.

You cannot go south of Hwy 90! If you go past the north lane of Hwy 90, either navigating or fishing you will be off limits and disqualified.

Important reminders...

You will check in with our volunteers and pay a **\$5.00 Launch fee**, inside the store so have exact change, please.

You need to pay close attention to our maps for traffic flow for this tournament.

We will be launching boats on the Belle River side at the Carwash Launch only!

- The launch behind the store will be closed for this event!

We will be checking in teams, starting at 4:30am. See maps below for traffic patterns and staging areas.

There are no crossovers once launched on **tournament day**.

This will be a rolling inspection. (See Maps for the location of the two boat checks) Please start prepping your boat before you get to the boat check station and be in the boat and truck as you pass by the station. Our team will inspect your boat and give you your ribbon.

After you pass boat check, completely prepare your boat to launch before you are on deck to launch, if you have not done so already.

Have all these items completed before reaching the launch, including...

- Navigation lights in and turned on. (They must work, or you can't fish)
- One PFD for each team member and captain, on the deck and visible.
- Kill switch must be visible and functioning.
- Live wells must be functioning.
- As you are in line to launch your boat, please pay attention to the boats in front of you. If they move up, please move up as well.
- **DO NOT LEAVE YOUR TOW RIG IN THE BOAT CHECK LINE AND ABANDON TO GO INSIDE THE STORE, IT WILL CAUSE GRIDLOCK FOR THE LAUNCH PROCEDURE.**
- **We encourage you to go shop inside the store for needed items but make sure you don't block traffic in the process.**
- This is a large number of boats to put in the water in a short amount of time. If you follow these guidelines, it will go very smoothly.
- If you don't follow these guidelines, you could be held to the last team to blast off.
- You may get your boat checked on the water if lodging close to the launch. Have angler check in then tell someone at the check in table that you need a boat check.
- **We want all boats in the water by 6:15AM. If you wait till the last minute, you will be in gridlock with many others who waited till the last minute. Understand that we may close the ramp during blast off so please don't be late.**

Once again, after launching, have your anglers pull away from the docks to wait for their captain to return to the boat.

DO NOT PARK AND SIT AT THE DOCKS!!!! Move to the staging areas for the tournament. (away from the launch on the spillway side and out in the cove on the Belle River side)

Please note:

There will be no boat/ Truck/ Trailer parking south of the store in the parking lot closest to the weigh-in. This will be reserved for spectators and fans.

For those fishing the spillway side, please remember that it's state law that you must be at least 100 yds from the launch before you are out of the no wake zone. **Make sure that you are past the launches and all staging boats before getting on plane.**

If you are going to fish the **spillway side**, line your tow vehicles and boat up on the **southbound side of Hwy 70** and please position off the road, as well as watch traffic closely.

As you pull over the levee, veer right and we will have two lanes to check boats out of the way.

If you are fishing the Belle River side, you will need to stage on the northbound side of Hwy 70. If coming from the north, go past Doiron's going south, find a place to turn around and come back north, staging on the northbound side of the hwy.

There will be two boat check lanes, If one lane or the other opens up with no one in it, please fill in to keep two lines moving.

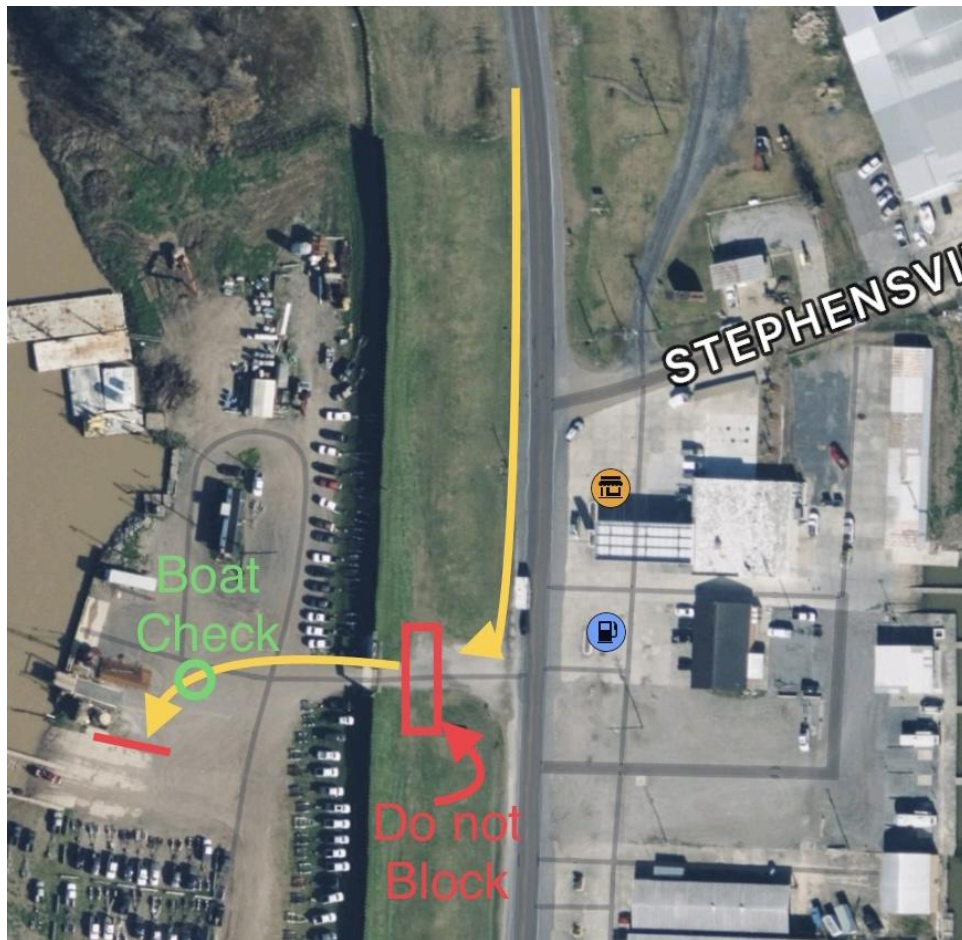
Once in line, do not leave your vehicle. If you need to do anything other than get ready to launch, make sure you find a place to park out of the way.

If you have any issues or questions, you can text us.

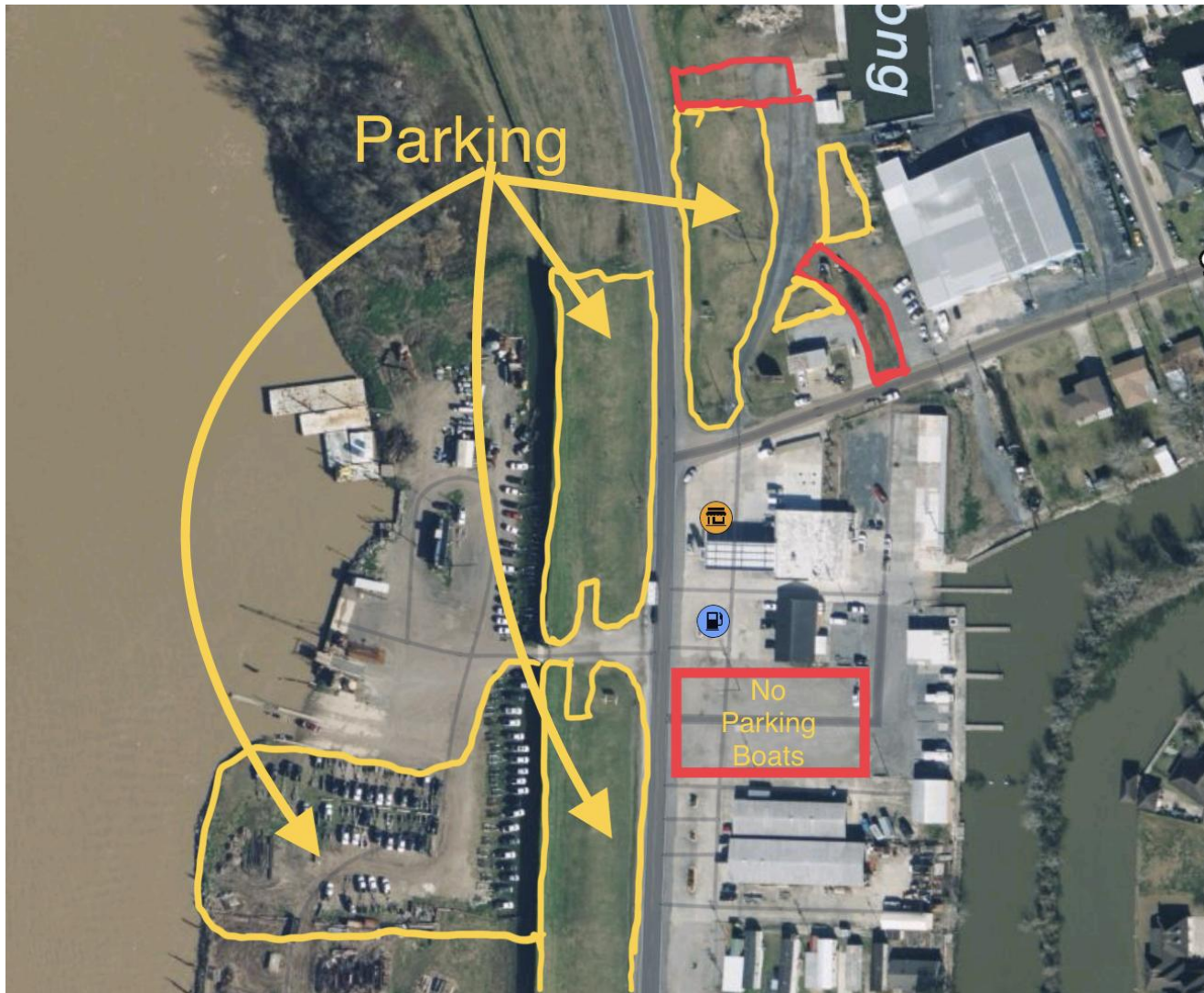
Tournament Director- Tommy Abbott- (504) 722-6638
Backup Official- Jim Breaux- (225) 772-3026

Please text if you can't reach the director. Do not call during blast off.

See maps below...

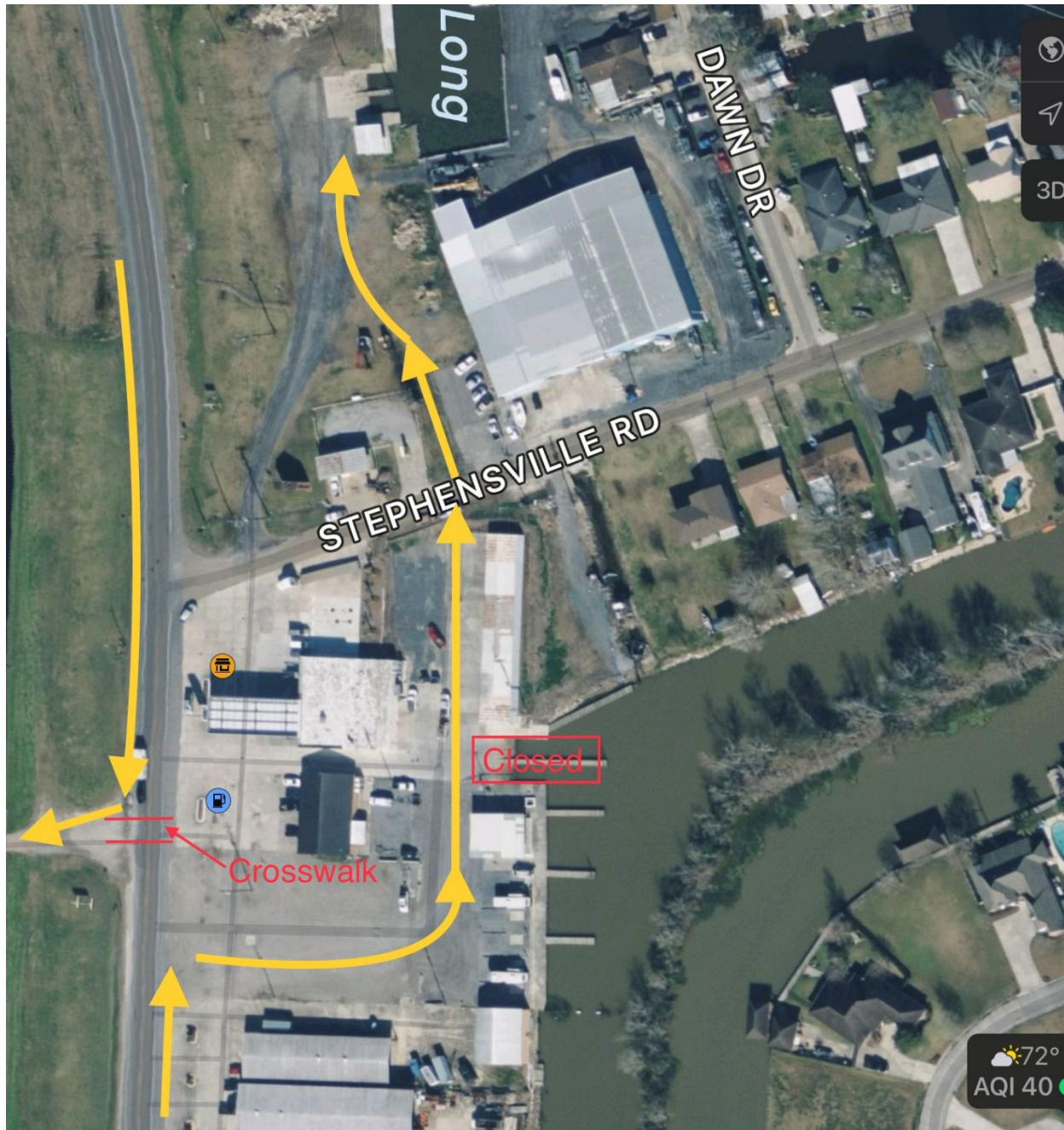


Spillway side Traffic Flow
Do not block the entrances to levee parking



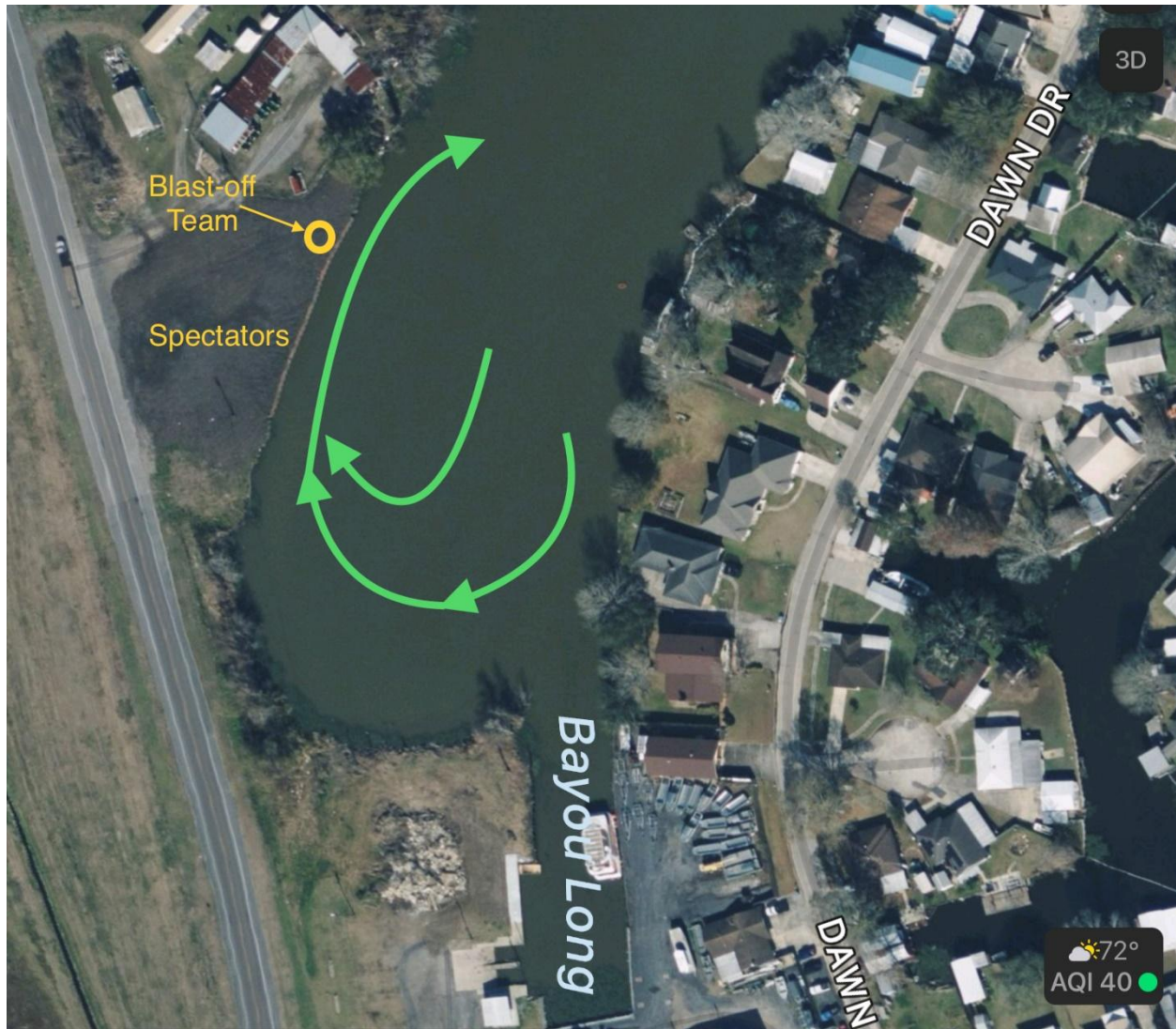
Parking areas

**Do not park tow rigs/ boats/ trailers in the area south of the store.
See map above.**



The launch behind the store is closed for this event

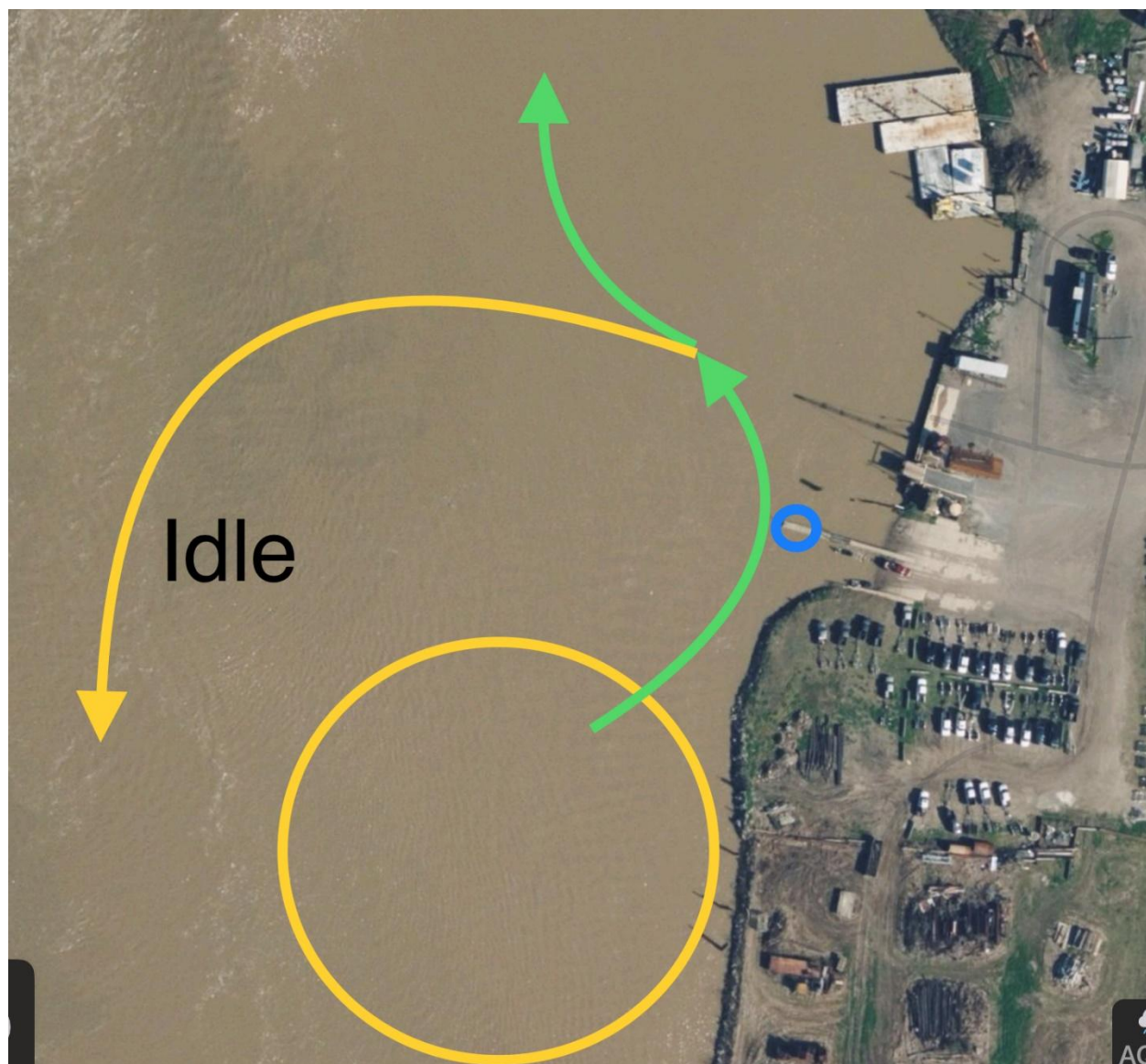
Please use the crosswalk show to cross the highway.



Blast-Off Procedure Belle River Side

Use your cards to line up in numerical order

Spectators and families can watch from area on the map.



Blast-Off Procedure Spillway Side



Afternoon Traffic Flow Belle River side

After returning in the afternoon, you will need to do the following things...

- Check in with tournament officials on the dock before your due in time, and make sure they have you checked in. They will be wearing flourescent yellow and have a clipboard, find them. They will be at the dock you launched from.

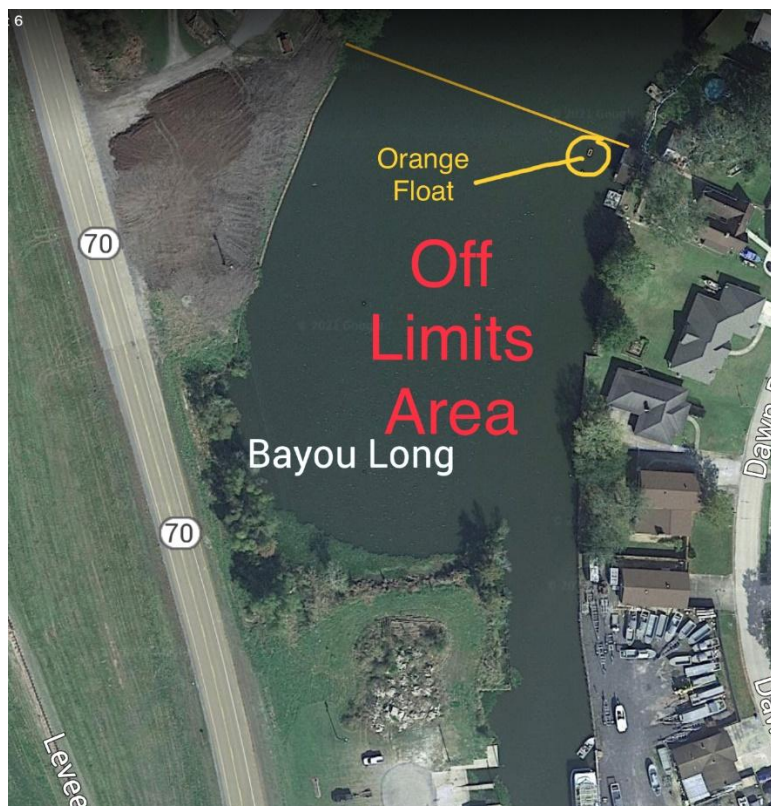
- Put your boat on the trailer and return to the parking areas.
- Once your boat is on the trailer, send **one angler** to the weigh bag table to get one of our bags with mesh bag inside. You must turn your card in to the bag table to get a weigh bag.
- Retrieve your fish **in our bag** and bring them to bump station line as quickly as possible to minimize the time that fish are in bags.
- After completing weigh in, move quickly off the stage and to the photo area.
- After your photos have been taken, quickly and carefully release fish off the dock. **BE GENTLE! Any dead fish are to be given to tournament staff.**



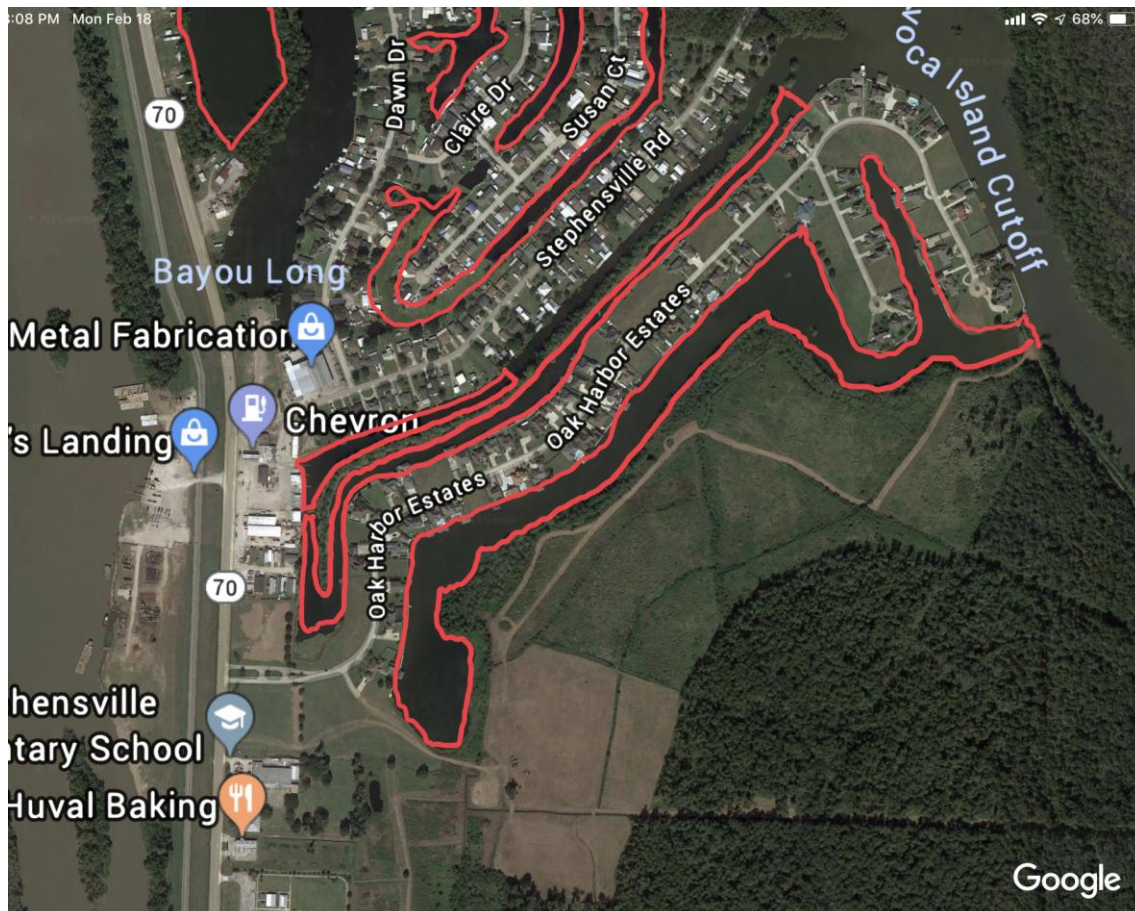
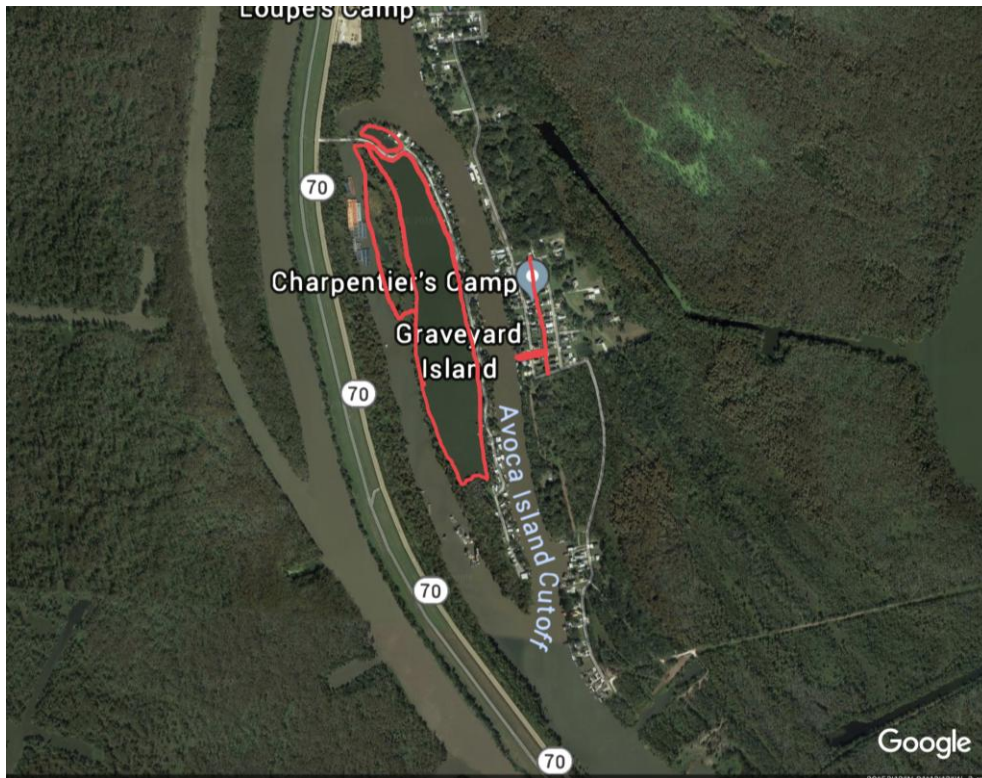
Weigh-in procedure

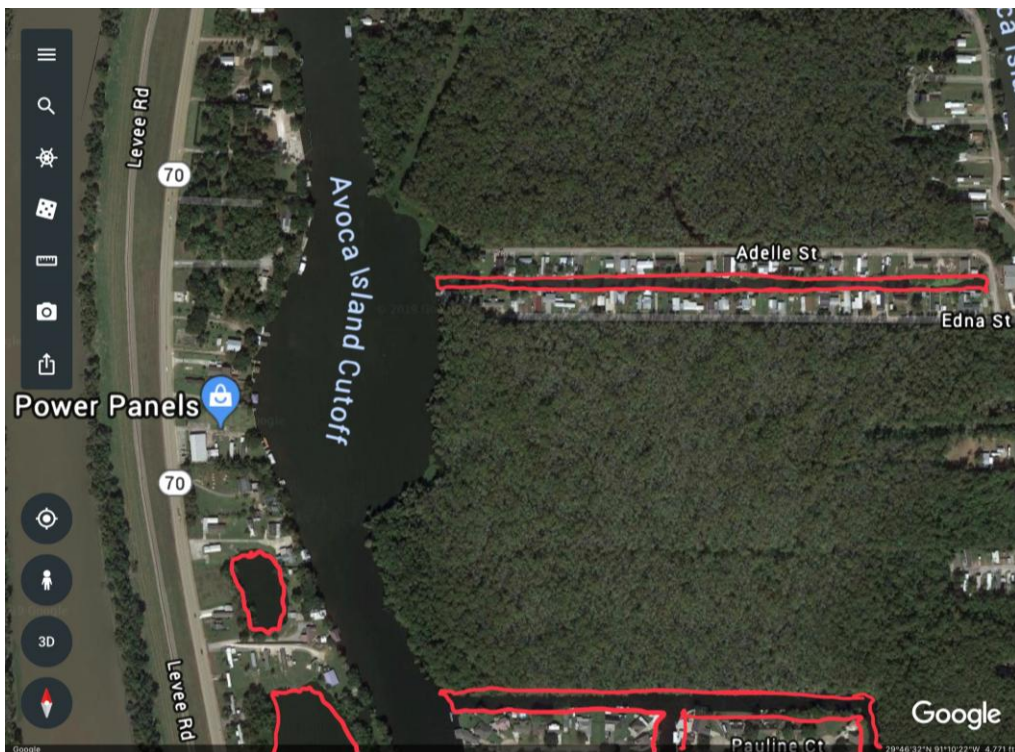
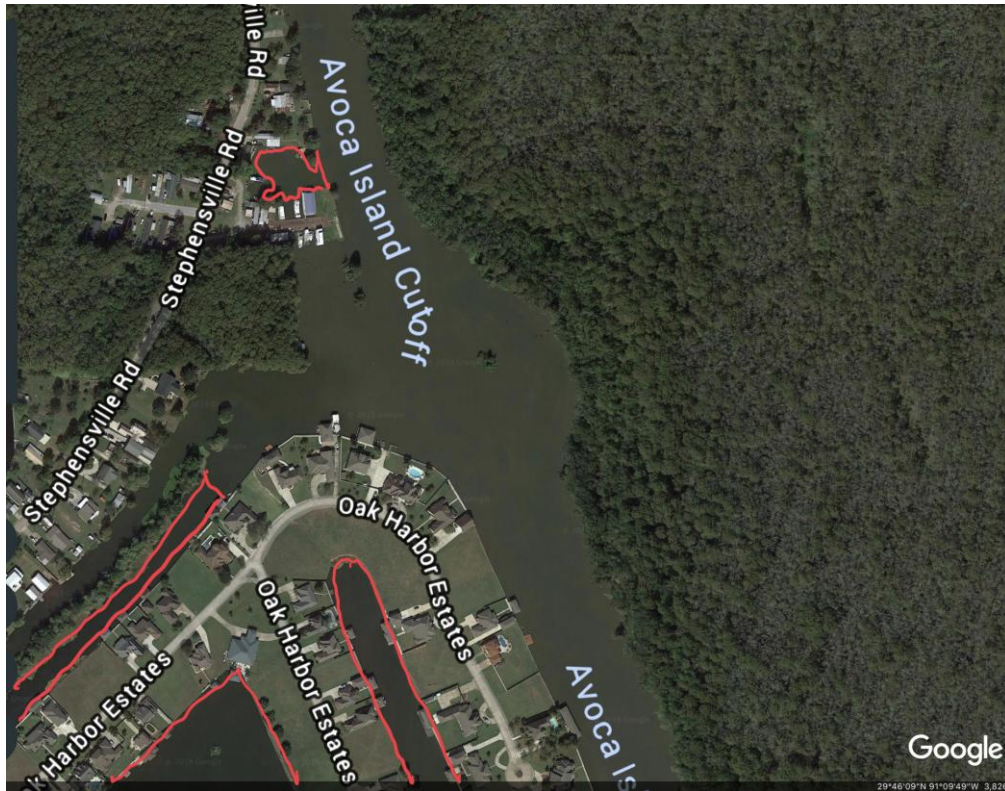
Off Limits Areas

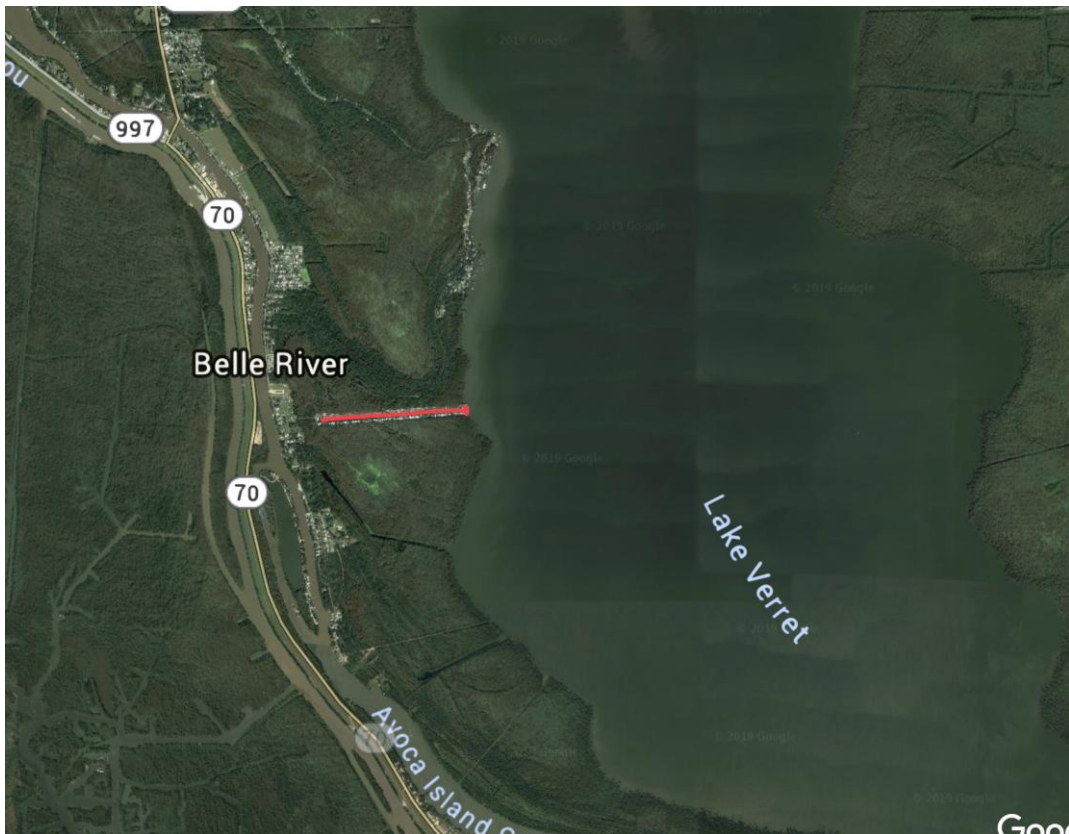
You may NOT enter or cast into off limits areas
(See Below)













Presented by

ZEALOUS

ENERGY AND ENVIRONMENTAL SERVICES



SHIMANO

Louisiana
LOUISIANA811.COM



BELZONA
OF BATON ROUGE, INC.



GRUNDÉNS
#WEAREFISHING



BUBBA

DISCOVER MONROE
WEST MONROE
outside the lines

