



Louisiana B.A.S.S. Nation  
2023 East Qualifier #2  
Atchafalaya Spillway  
Belle River Public Landing, Pierre Part, LA  
February 4<sup>th</sup> (Official practice day Friday, February 3<sup>rd</sup> )  
Presented By



**This document is a supplement to the official rules document** and assists with important information.

Tournament waters are all water accessible from Belle River Public Landing, 1898 Levee Rd, Pierre Part, LA 70399

**You cannot go south of Hwy 90!** If you go past the north lane of Hwy 90, either navigating or fishing you will be off limits and disqualified. See rules for additional off limits and restrictions.

Here are some maps and reminders.

The address is:

1898 Levee Rd  
Pierre Part, LA 70399

Important reminders...

We will be checking in teams, starting at 4:30am. See maps below for traffic patterns and staging areas.

This will be a rolling check-in. You may start prepping your boat before you get to the check-in station but please be in the boat and truck as you pass by the station. Our team will check you in and give you your card and ribbon.

**You will pay a \$2.00 Launch fee at our check-in station so have exact change, please.**

After you pass the check-in station, completely prep your boat before you are on deck to launch.

Before your boat goes in the water, have all these items completed before reaching the launch, including...

- Navigation lights in and turned on. (They must work, or you can't fish)
- One PFD for each team member and captain.
  - PFD's must be on and buckled when launching the boat.
- Kill switch must be visible and functioning.
- Live wells must be functioning.
- As you are in line to launch your boat, please pay attention to the boats in front of you. If they move up, please move up as well.
- This is a large number of boats to put in the water in a short amount of time. If you follow these guidelines, it will go very smoothly.
- If you don't follow these guidelines, you could be held to the last team to blast off.
- **We want all boats in the water by 6:15AM. If you wait till the last minute, you will be in gridlock with many others who waited till the last minute.**

Once again, after launching, have your anglers pull away from the docks to wait for their captain to return to the boat. (Dock space is reserved for Juniors)

**DO NOT PARK AND SIT AT THE DOCKS!!!!** Move to the staging areas for the tournament. ( on the opposite side away from launches)

## **Boats will be checked on the water at blast-off.**

As numbers are being called, you will idle past the dock with all your safety items completed and your livewells open. We will check your boats as you pass our team on the dock.

- If you don't pass inspection, you will not be allowed to fish until the needed safety item is completed or repaired.

If you have any issues or questions, you can text us.

Tournament Director- Tommy Abbott- (504) 722-6638

Backup Official- Jim Breaux- (225) 772-3026

**Please text if you can't reach the director. Do not call during blast off**

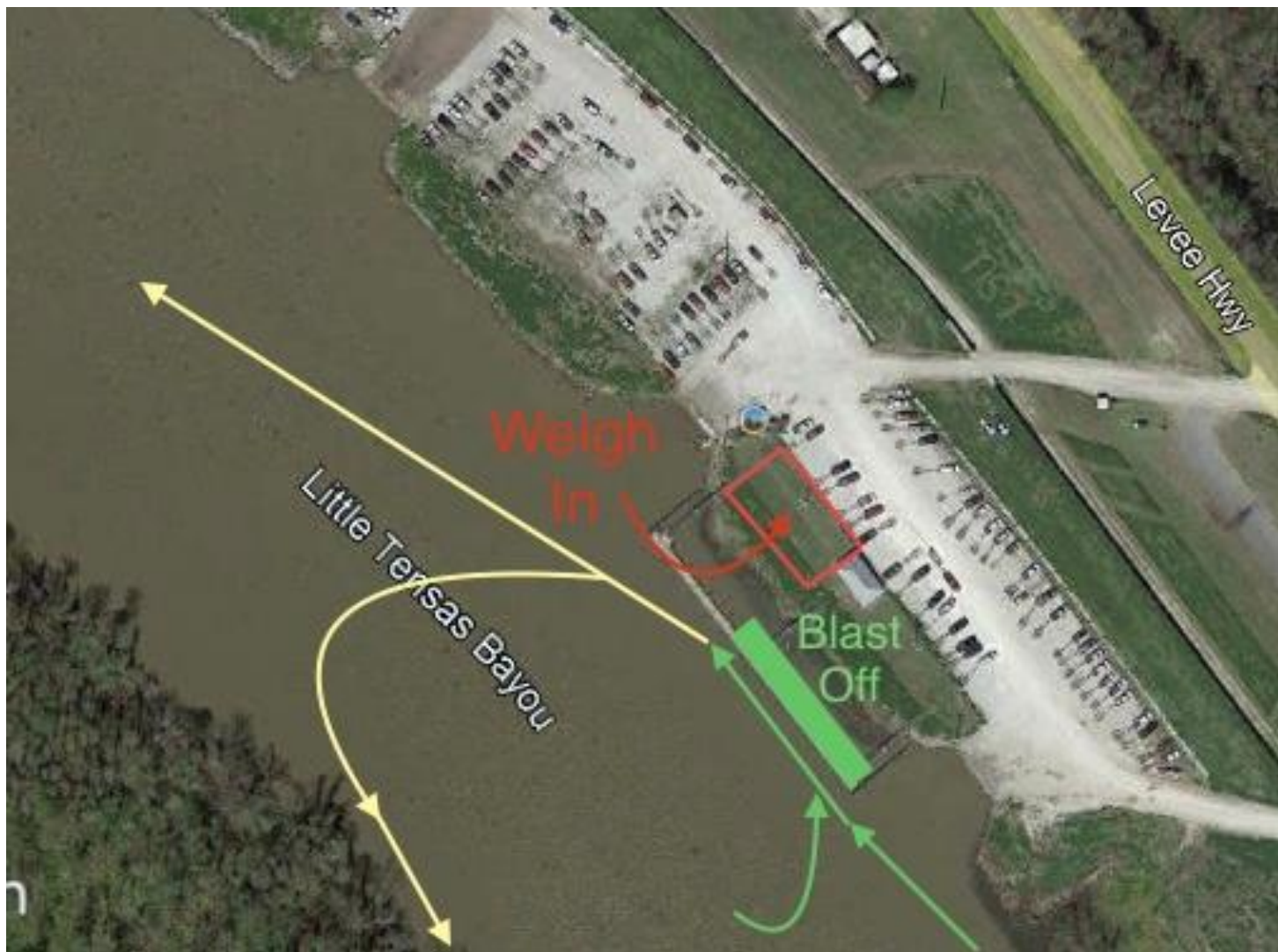
It's state law that you must be at least 100 yds from any launch before you are out of the no wake zone. **Make sure that you are past all three launches before getting on plane.**

**See maps below...**



Launches and parking areas are color coded.

- If you launch at Launch 1, park in the area marked in yellow.
- Launch 2- Park in the area Marked in orange.
- Launch 3- drive over the levee and park in the area marked in bright yellow
- If any one area runs out of parking, move over the levee and park there.
- There should be additional parking in the area north of the Launch 3 parking area where the map indicates "Levee Hwy"



Once again, for blast off, you will come from the south and idle past our team for boat check.

- DO NOT GET ON PLANE UNTIL YOU PASS ALL LAUNCHES.
- If you are going south after your number is called, idle around and along the west bank until you pass **all boats** before getting on plane.



- For afternoon check-in all boats will approach our team from the south as shown on the map.
  - Do not block the launches where people are loading boats.
- After passing check in, pull as far forward on the dock as possible and drop the person retrieving the tow vehicle as quickly as possible. Do not park and wait on the dock.
  - We will make exceptions for Junior captains.

- Once your boat is on the trailer, send **one angler** to the weigh bag table to get one of our bags with mesh bag inside.
- You must place your card in the bucket located in the area designated on the map above.
  - All teams whether weighing fish are not, must turn in cards. **\$10 fine for not turning in cards**
- Retrieve your fish **in our bag** and bring them to bump station line as quickly as possible to minimize the time that fish are in bags.
- After completing weigh in, move quickly off the stage and to the photo area.
- For fish care and conservation we ask that no photos be taken outside the photo area.
  - We want these fish released as quickly as possible to increase their chances of survival.
- After your photos have been taken, quickly and carefully release fish off the dock. **BE GENTLE!** Any dead fish are to be given to tournament staff

