



Louisiana Youth B.A.S.S. Nation
2025 State Championship
Monroe, LA, D'Arbonne State Park
5/3/2025 and 5/4/2025 Presented By



Please read this in its entirety. We know some read this, but we have a large number who don't. If you know teams that are not on Facebook, make sure they have this information to avoid issues.

This is posted on the D'Arbonne Watershed Commission website so I would heed this warning.

"All watercraft must reduce to idle speed within 50 feet of all state highway bridges over the Lake. A violation is considered a misdemeanor and carries a fine not to exceed \$500."

We will enact a 45 MPH speed limit in any creek arm of Lake D'Arbonne where boat lanes are narrow and there is a danger of accidents at higher speeds

Understand that these boat lanes can be dangerous with the unpredictability of other boat operators. Slow down and or yield to oncoming traffic if need be.

Do Not Get Outside of the Boat Lanes!!!!

Parking and day use fees have been waived for our event, so you don't have to pay when you get to the park

Tournament waters are public waters of D'Arbonne Lake within the impoundment. **No fishing within 200 yards of the host landing**

The minimum length for bass on D'Arbonne Lake will be 12"

We will start check in at **4:45am** Saturday morning at the D'Arbonne State Park Launch. (See Maps)

As you are driving through the park, please stay as close to the right-hand shoulder as you can to avoid blocking oncoming traffic.

Have all your gear in your boat before you are on-deck to launch. If you stop on the ramp to put items in your boat, we will send you to the back of the line.

When approaching the ramp area, please **turn your headlights off** to avoid blinding those trying to back boats and directing traffic.

Items to be completed at boat check:

- **Navigation lights in and turned on.** You will not be allowed to fish if your lights aren't working.
- **Livewells open** for inspection.
- **PFD's on, snapped, or zipped.**
- **Be checked in and launched no later than 6:00am.** Come early so you won't be late to blast off.
- **If you don't pass inspection, you will be asked to move to the side to fix any issues.**

We have boat navigation lights for sale if your lights fail, just ask us.

You may motor from the other areas at a "reasonable" distance but use extreme caution navigating and go slowly. For those arriving via water, check in will be done at the dock at both launches. **If you plan to arrive via water, you must text us at (504) 722-6638 to let us know your plans no later than 5/1/2025, 5:00pm.**

If you are coming to the blast off in the morning via water, we ask that you try to navigate at idle speed due to the dangers of low light navigation. Travel at your own risk.

Also, if you come to the launch via water, it is your responsibility to check in, and get your ribbon. **(Teams will tie their own ribbons on trolling motors for this tournament)**

This will be a very crowded launch and parking area. Be courteous and park as tight as you can to maximize parking spots. We will have personnel there to direct traffic in the immediate launch area. **See maps for traffic flow.**

After launching boats, drivers, proceed immediately to the parking areas. Please be considerate and avoid getting in a position that would impede traffic flow.

Do not park your boat on the docks and hang out.

- **Only use the docks for entering and exiting boats** as well as getting boat checks. This is a courtesy to those needing to get to their boats and we will monitor this. It's always a problem so please help us.
- **Have angler motor or use trolling motor to move away from launches** to wait until the driver returns for pickup. **This is of utmost importance at this launch!!! It only has one small dock, and you can't park to wait on a driver/captain to return.** Penalties may be assessed to those blocking the dock!

- Jr Teams will be the exception. If you need assistance, please ask our volunteers.

Please look at maps on the pre-tournament documents to see the staging area for blast off. We don't want boats blocking teams trying to go past the dock to blast off.

DO NOT CROWD THE DOCK AREA RIGHT BEFORE BLAST OFF OR DURING BLAST! MOVE TO THE STAGING AREA AND STAY OUT OF THE WAY OF TEAMS TRYING TO BLAST OFF leave an open lane from between the dock and staging area.

When you see us starting to get ready for the blast off, move away from the dock area.

- Boat J1-J5 can line up in order by the dock, J1, you will stage right next to our crew at the end of the dock.
- Boats J6-10 behind them and so on.
- **Communicate so everyone can line up and try to pass the officials right as your boat number has been called.**
- **Have no more than a 20-30 yd gap between boats as you go out**
- **We will have all boats pull their kill switch at once before blast off begins.**

We will blast off at safe light which is between 6:20-6:45 am depending upon cloud cover.

- You control how early we start but we won't wait on late arrivals.

Juniors due in at 2:00pm. Don't be late.

High School first flight is due in at 3:00.

- If you aren't checked in with tournament officials on the same dock where we blasted off, before your due in time, you are late.
- Late penalties will be assessed if late.
- Pull by and keep moving to check-in

You are required to use **OUR** tournament bags with mesh inserts.

Once your boat is on the trailer, **send one angler to the bump station to retrieve one of our bags** then return to get the team's catch.

If you bring fish to the bump station in a bag other than our official bags, it may result in a penalty.

Photos will be taken in a **photo area only**. Parents/ family/ captain may take photos as well.

This will be a long walk back to the water. Let your fish recover in the live tanks before returning them to the lake.

- **Please, gently release these fish**

- **If you have a very large fish**, let it recover completely in one of our tanks.
 - **We may have you fill a bag with lake water** then transport the fish in fresh water.
 - **Mak sure its able to swim on its own before leaving the fish.**
- **Any dead fish should be given to tournament staff. Please don't throw a dead fish in the lake, we must retrieve it before we leave.**

Afternoon boat ramp area tips

- **Very important!! Do not stop in the parking area to strap your boat unless you pull into a parking spot.**
- When exiting the launch areas make sure to pull to the **left lane** and leave room for tow vehicles to pass on your right who are parking or need to trailer their boat.
 - **This seems backwards** but it puts you on the side to stage for the launch. (see maps)

DO NOT BLOCK THE ENTRANCE/ EXIT TO A LAUNCH, BE COURTEOUS AND WAIT UNTIL YOU CAN PULL BOTH TRUCK AND TRAILER COMPLETELY OUT OF THE FLOW OF TRAFFIC BEFORE YOU MOVE FORWARD!

Please read and understand all these documents.

- **This is for everyone.** We all want a smooth tournament and blast-off and that starts with YOU understanding the plan.
- Most of the many questions that we are asked, come directly off the rules document.
- You should always keep a copy of the rules in the boat for reference.

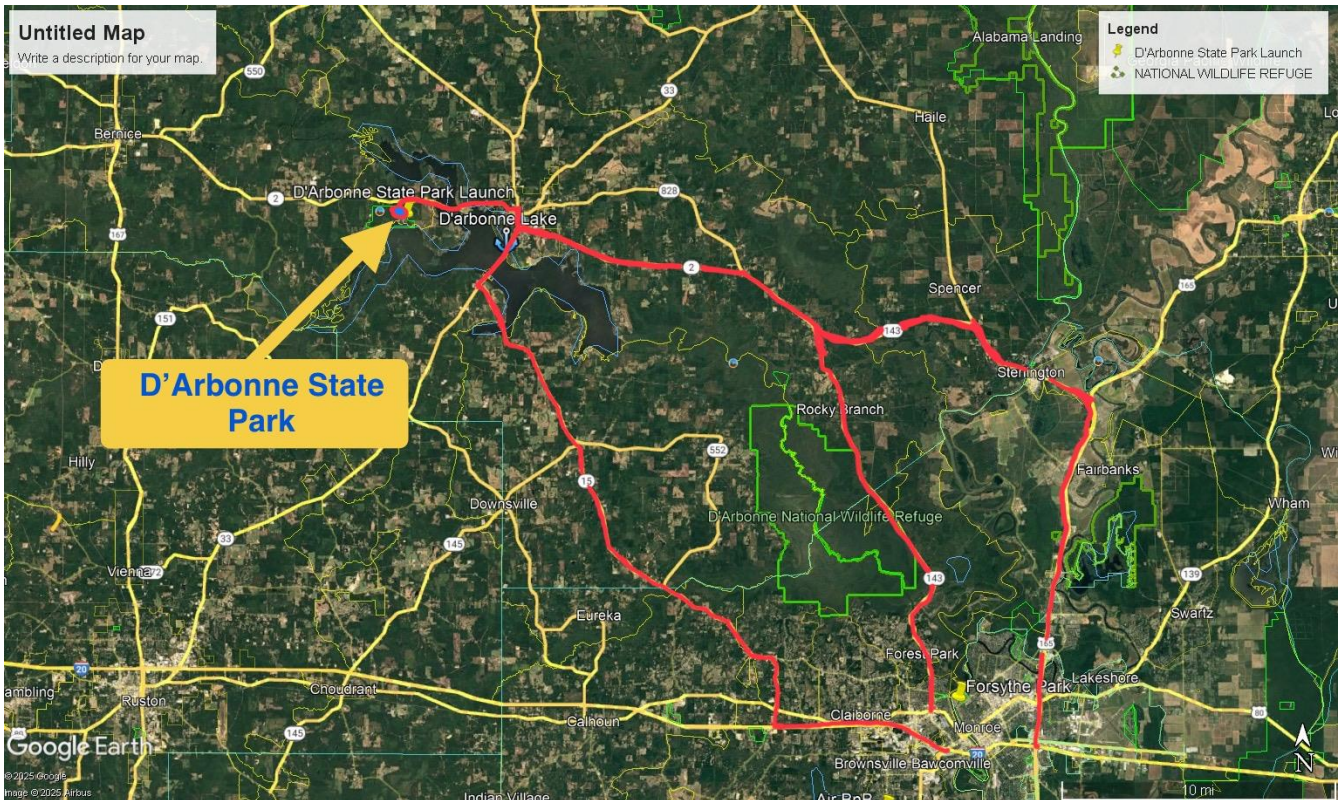
Be courteous to tournament, as well as non-tournament boaters.

Etiquette and common courtesy things to remember.

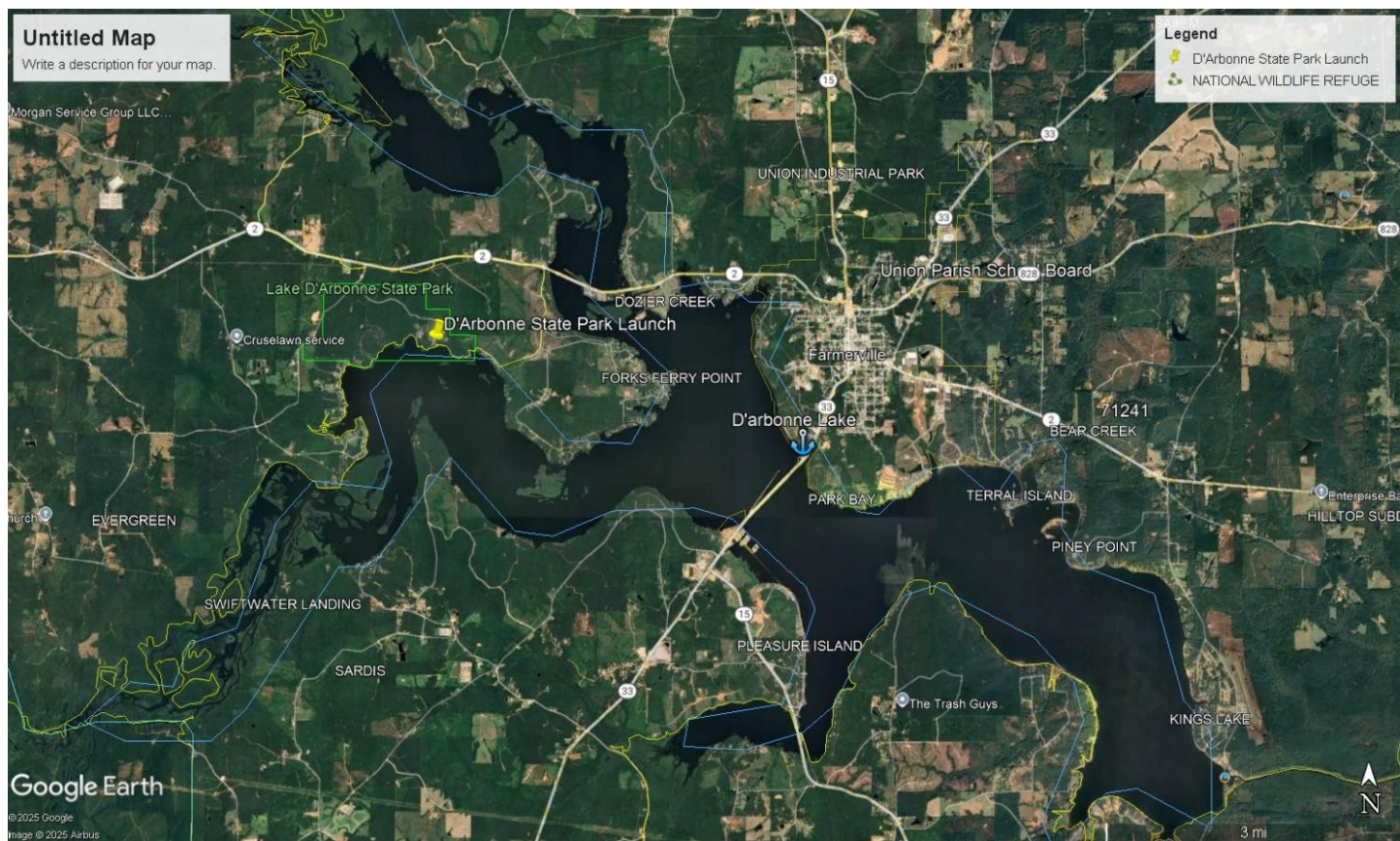
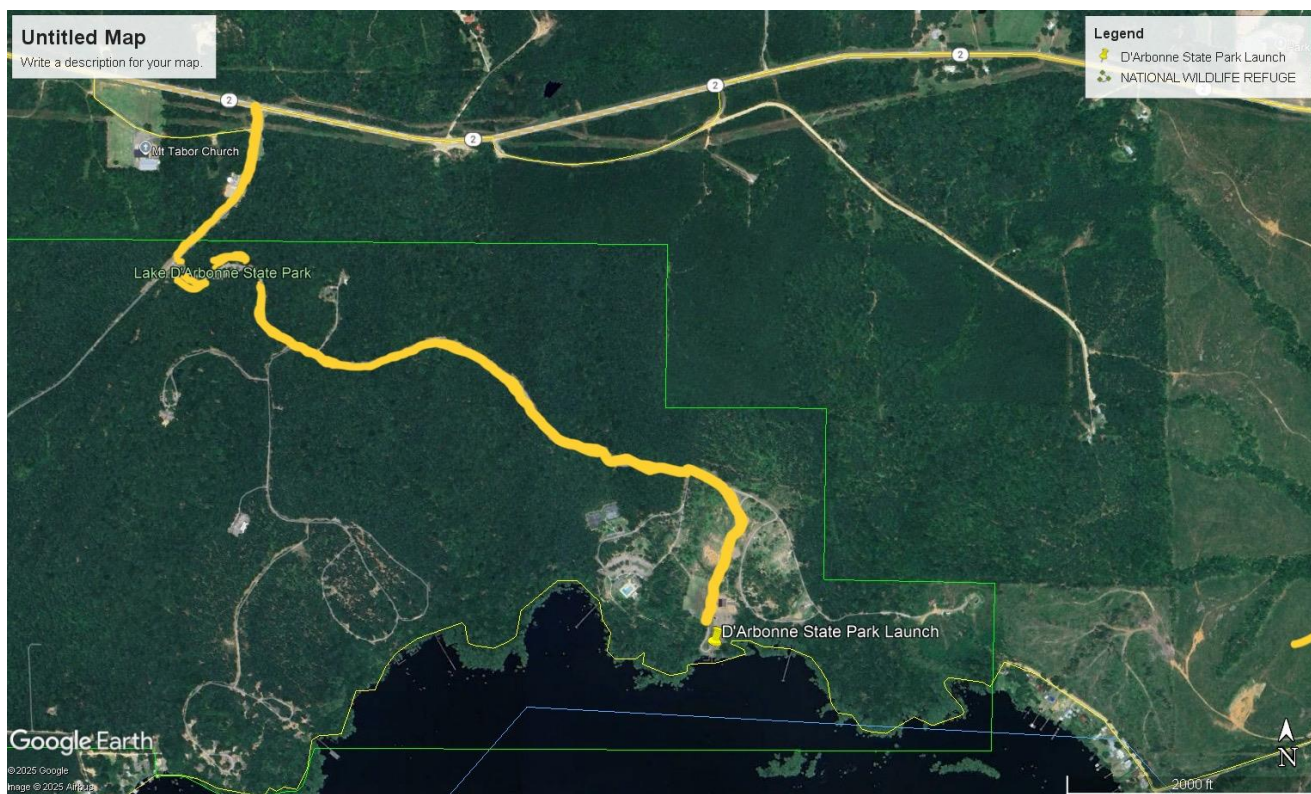
- Stay in the boat lanes and be smart. If you go outside the markers, you will be in the stumps.
- Boat lanes on D'Arbonne are narrow, you may have to yield to oncoming traffic.
- **This lake will fish small** with this many boats courtesy and respect for others is important!
- **Be aware of where other teams are fishing and what direction they are heading so you don't cut off their fishing path off.**
- Slow to an idle, no wake, when passing within 50 yards of another boat.
- **Please do not cut a team off by pulling in front of them as they are fishing down a bank.**

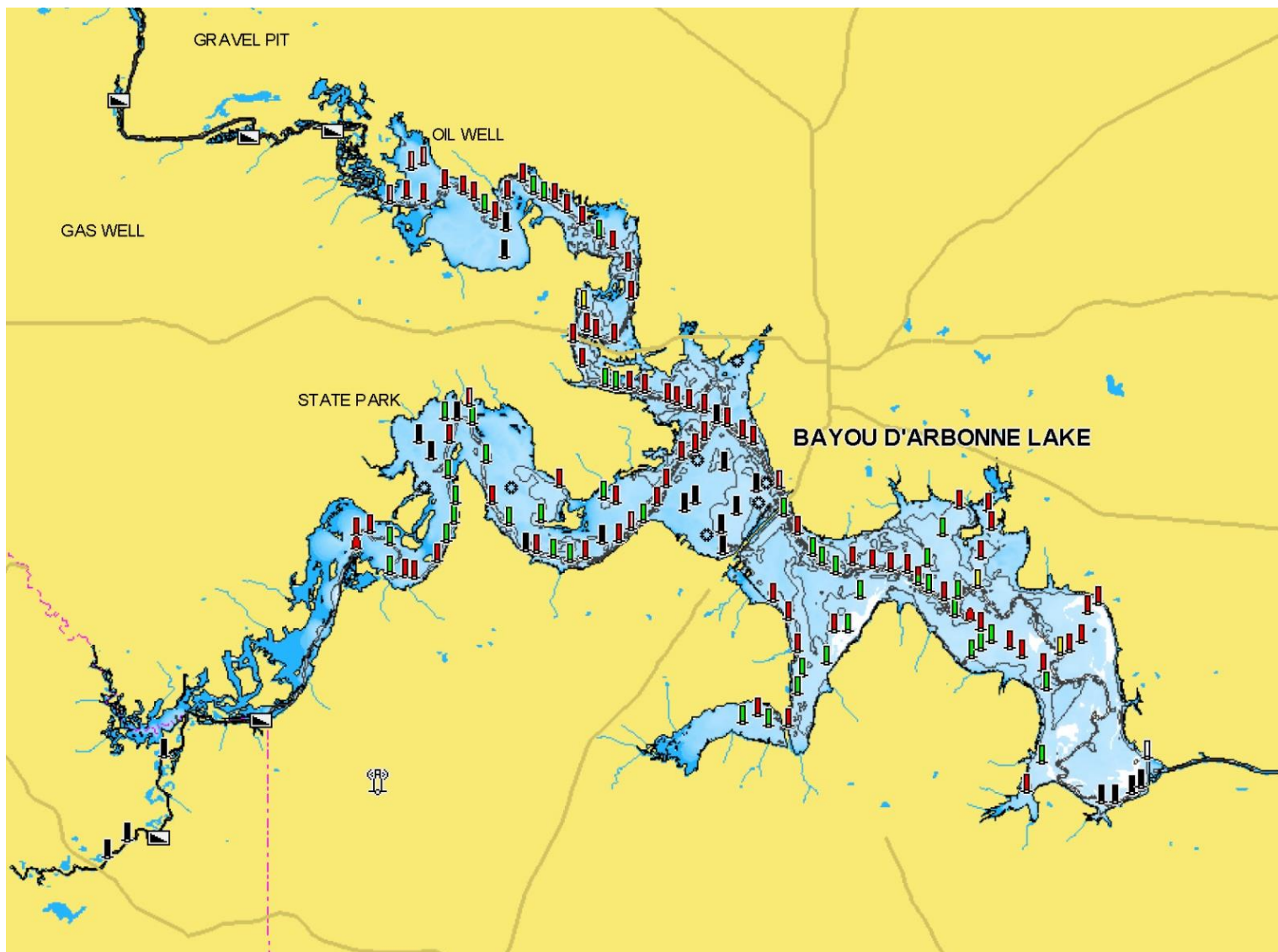
- This doesn't mean stay 50 yds away, pass them and pull in 25 yds in front of them.
- **If someone gets to a spot before you, it's their spot, not yours.**
- **Etiquette and rules are two different things. Please, not only obey the rules but use the proper etiquette and ethics.**
 - **Don't do anything that you wouldn't want others to do to you.**
 - Think about that!
- If you are headed to within 25 yards of another boat, please get permission to go by, but once again, do not pass and cut off their fishing direction.
 - If they are in a confined area and do not give permission, please do not pass them.
- If a team is fishing a dock, do not cut them off by pulling in front of them and keeping them from fishing the rest of the dock.
 - Wait on them to leave if need be. Then you can fish it.
 - You can fish other areas close by while waiting.
- If a team is fishing a point, same thing, don't pull in on the opposite side close to them and cut them off.
- No verbal or physical confrontations.
 - That breaks the BASS code of conduct and are grounds for disqualification. Report immediately, via text, to tournament officials if a violation occurs.

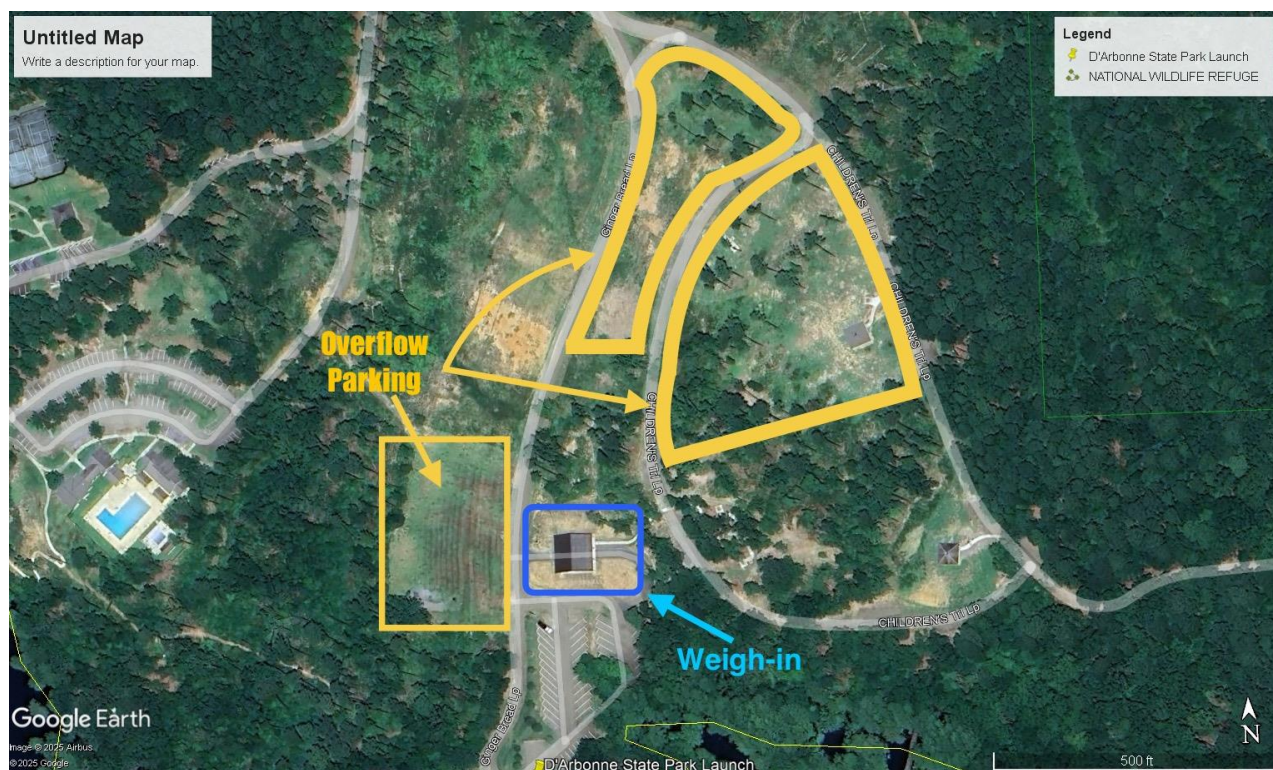
Monroe Civic Center



D'Arbonne Location from Monroe









Afternoon Check-in

